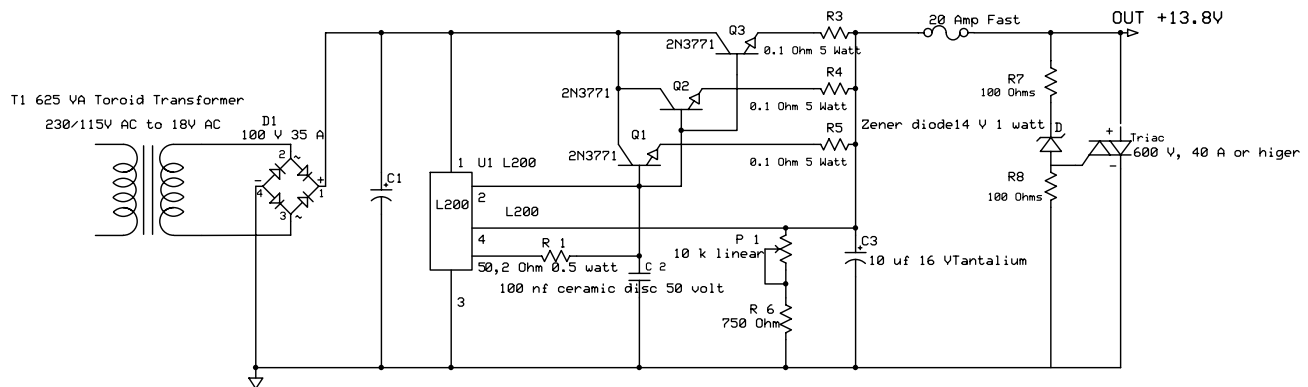


All resistors are 0.5 watt except R3, R4, R5

Over Voltage Protection Circuit

It activates the Triac when the output is more than 14 Volts
The triac will shorting the output to ground and the fuse will be blown out



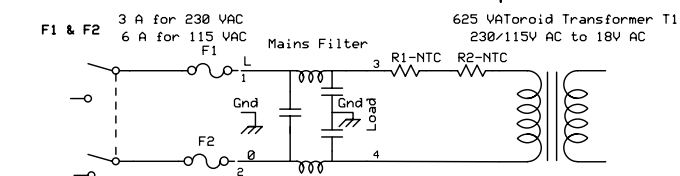
P1 Adjust output to 13.8 Volts

C1= Electrolytic Capacitor minimum value 60.000 uf 25 V

If needed use several capacitors in parallel

For optimum preformance calculation use 2500 uf per amp

Input circuit T1



Inrush current protection by NTC resistors

DK4DDS		
13.8 V 22 AMP POWER SUPPLY with L200		
Marc van Stralen	Rev 1.1 10.08.2008	Page 1